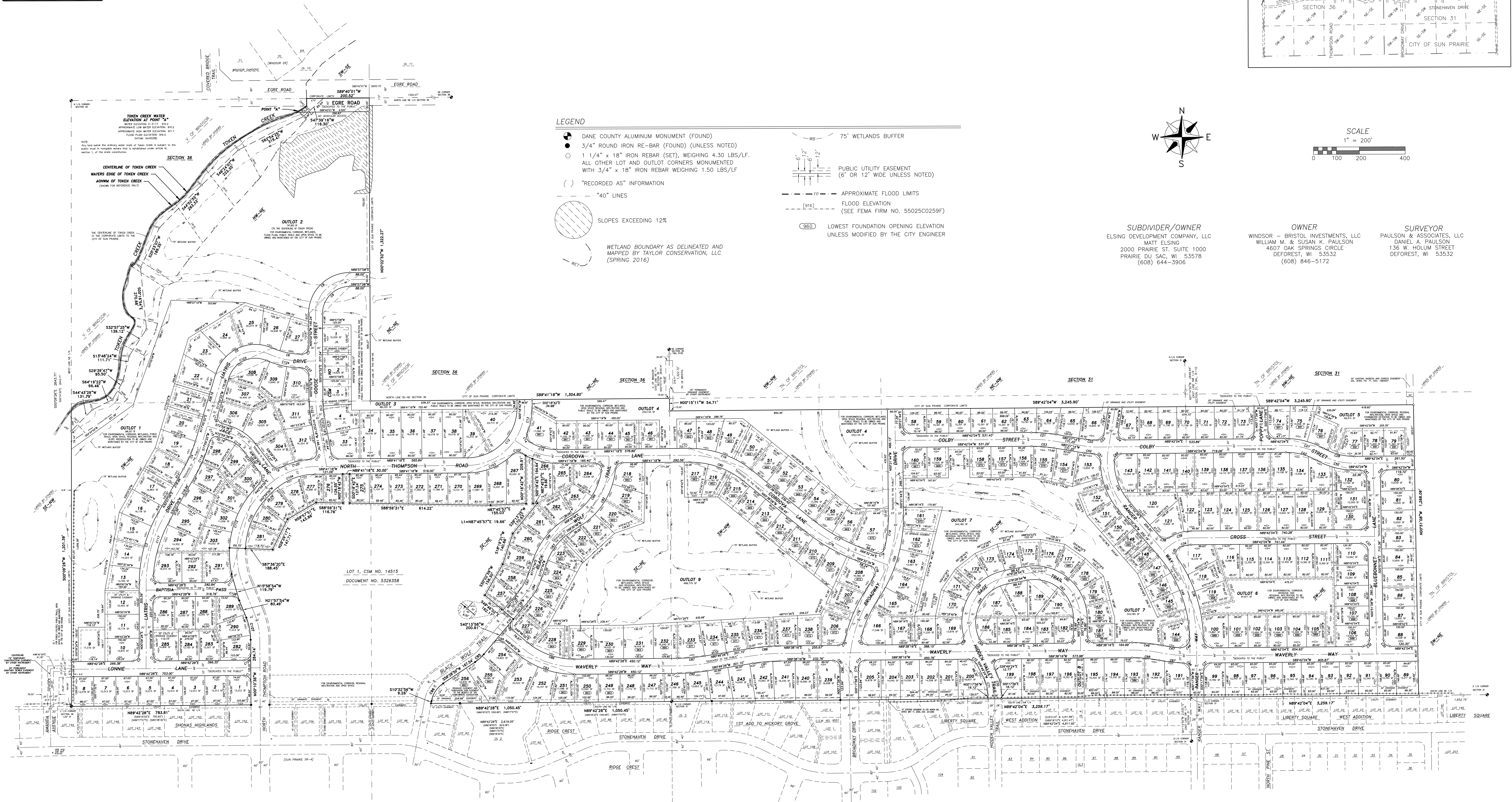
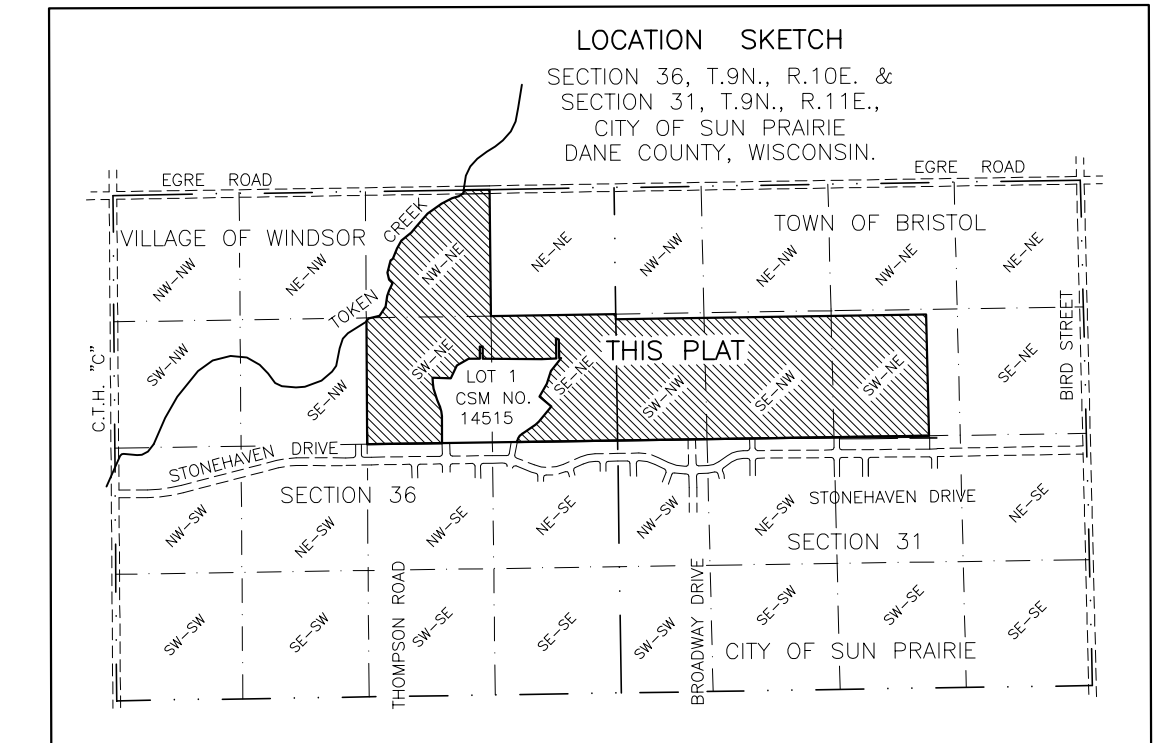




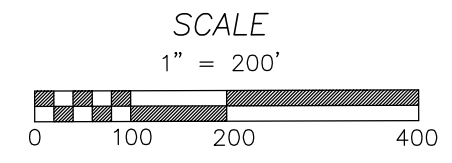
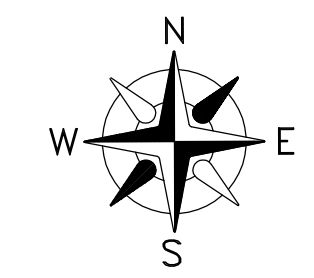
THE RESERVE

LOCATED IN THE NW 1/4 OF THE NE 1/4, THE SW 1/4 OF THE NE 1/4, AND THE SE 1/4 OF THE NE 1/4, SECTION 36, T9N, R10E, THE SW 1/4 OF THE NW 1/4, THE SE 1/4 OF THE NW 1/4, AND THE SW 1/4 OF THE NE 1/4, SECTION 31, T9N, R11E, CITY OF SUN PRAIRIE, DANE COUNTY, WISCONSIN AND LOTS 1-4, CSM NO.



LEGEND

- DANE COUNTY ALUMINUM MONUMENT (FOUND)
- 3/4" ROUND IRON RE-BAR (FOUND) (UNLESS NOTED)
- 1 1/4" x 18" IRON REBAR (SET), WEIGHING 4.30 LBS/LF. ALL OTHER LOT AND OUTLOT CORNERS MONUMENTED WITH 3/4" x 18" IRON REBAR WEIGHING 1.50 LBS/LF
- () "RECORDED AS" INFORMATION
- - - "40" LINES
- WETLAND BOUNDARY AS DELINEATED AND MAPPED BY TAYLOR CONSERVATION, LLC (SPRING 2016)
- 75' WETLANDS BUFFER
- PUBLIC UTILITY EASEMENT (6' OR 12' WIDE UNLESS NOTED)
- APPROXIMATE FLOOD LIMITS
- FLOOD ELEVATION (SEE FEMA FIRM NO. 55025C0259F)
- LOWEST FOUNDATION OPENING ELEVATION UNLESS MODIFIED BY THE CITY ENGINEER



SUBDIVIDER/OWNER
 ELSING DEVELOPMENT COMPANY, LLC
 MATT ELSING
 2000 PRAIRIE ST. SUITE 1000
 PRAIRIE DU SAC, WI 53578
 (608) 644-3906

OWNER
 WINDSOR - BRISTOL INVESTMENTS, LLC
 WILLIAM M. & SUSAN K. PAULSON
 4607 OAK SPRINGS CIRCLE
 DEFOREST, WI 53532
 (608) 846-5172

SURVEYOR
 PAULSON & ASSOCIATES, LLC
 DANIEL A. PAULSON
 136 W. HOLM STREET
 DEFOREST, WI 53532